

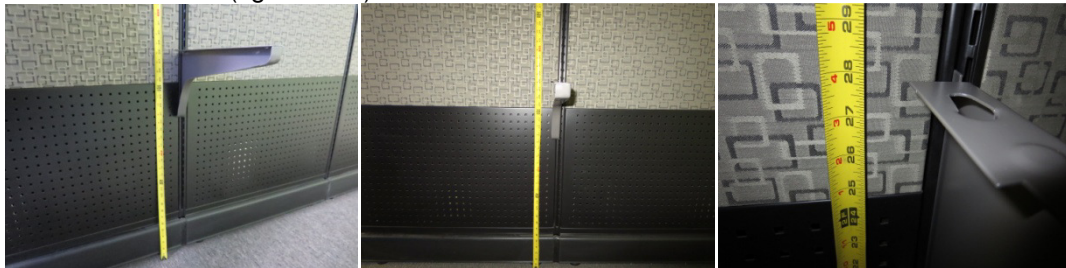
Worksurface Installation with Pins and Buttons

Hardware Kit Includes

- 1 pair of Support Arms
- 2 Pins Screws
- 2 Button Screws
- 2 Leveling Pins



Step 1. Measure location off floor for correct mounting height (figure 11.3) Your location off the floor will vary depending upon your application. Verify the dimension using a pedestal as reference or specific instructions from your customer as to the desired height. Generally about 27 1/2-28" is the best selection, but this will vary depending upon the job site conditions. Begin by inserting the clip at the rear of the support arm into the hanger frame on the side of the panel (figure 11.4). Push arm firmly into hanger frame, use a small mallet to insure proper insertion (figure 11.5). NOTE: Be careful to not damage the painted finish. It is recommended that you install all support arms in a given station prior to work surface installation (figure 11.6).

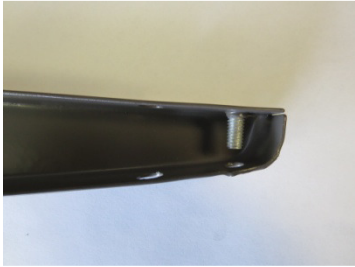


Step 2. The next step is to install the work surface Pins & Buttons on the under side of the work surface.

NOTE: The work surface has four pre drilled holes (Figure 11.7). Place the Button Screw in the first whole from the rear. Skip the next whole (closest to the button screw location) then place the Pin Screw. Copy this layout to the other screw locations.



Step 3. Insert Leveling Pin in support (just a few turns).



Step 4. Install work surface. Instruction provided in current install guide.

